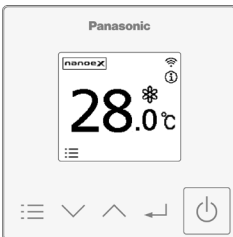
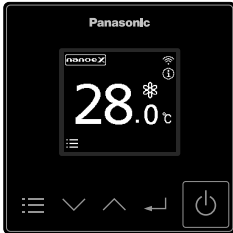


Model No. **CZ-RTC6Z2**
CZ-RTC6WZ2

Page



Installation Instructions
separately attached



<https://eu.datanavi.ac.smartcloud.panasonic.com/documents/index.htm?model=CZ-RTC6Z2>

Before operating the unit, read these Operating Instructions thoroughly and keep them for future reference. This booklet mainly mentions the safety-related regulatory matters. Regarding the contents of the operation, please scan the QR Code and refer to the detailed manuals.



Please scan the QR Code and refer to the detailed manuals.

● Safety precautions	3
● Part names	5
• Control panel / Top screen	5
● Specifications	6
● Firmware Update Function	6
● Copyright	7

Thank you for purchasing the Panasonic zone remote controller.

- Read the Operating Instructions carefully for safe use. This manual describes the Operating Instructions of the zone remote controller. Read this manual as well as operating instructions supplied with indoor units and outdoor units.
- **Be sure to read the “Safety precautions” (P.3) before use.**
- Keep this manual with operating instructions supplied with indoor units and outdoor units in a safe place.
- Be sure to keep this manual in a place easily accessible by users. In the case of user change, be sure to give this manual to the new user.
- To use this zone remote controller, an air conditioner, a zone control box (on/off or multiple opening step model), damper (field supplies) and damper motor (field supplies) are required. Please consult Panasonic for full details.
- **The “Panasonic Comfort Cloud” app screen may change without notice due to updates.**

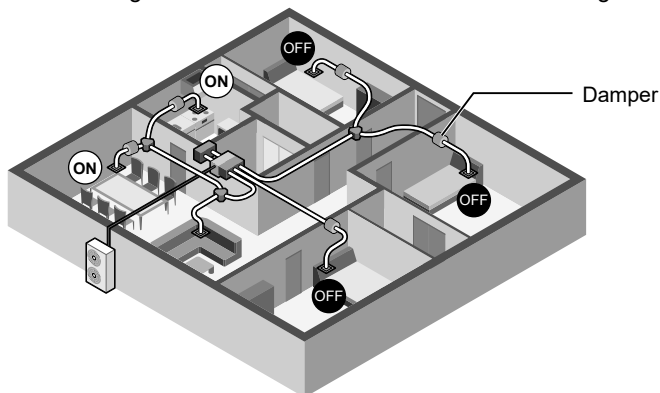
■ Zone air conditioning

You can select the rooms to air condition by opening or closing the dampers fitted to the vents of the ducted air conditioners.

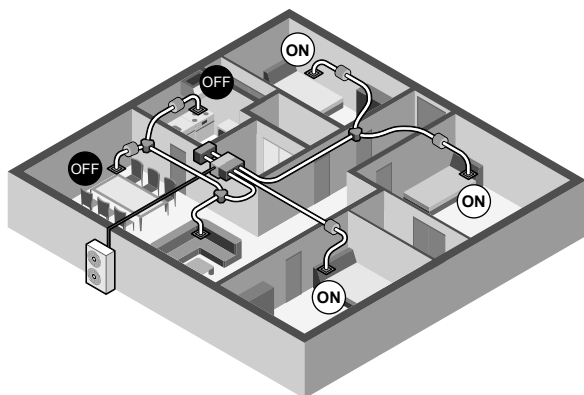
Air conditioners made more compact and able to save more energy.

■ Example:

- The dining room and kitchen are air conditioned during the day



- At night, the bedrooms are air conditioned



Safety precautions



WARNING

This symbol refers to a hazard or unsafe practice which can result in severe personal injury or death.



CAUTION

This symbol refers to a hazard or unsafe practice which can result in personal injury or product or property damage.



Matters to be observed



Prohibited matters



WARNING



Do not use this appliance in a potentially explosive atmosphere.

In case of malfunction of this appliance, do not repair by yourself. Contact the sales or service dealer for repair and disposal.



In case of emergency, remove the power plug from the socket or switch off the circuit breaker or the means by which the system is isolated from the mains power.



Select an installation location which is rigid and strong enough to support or hold this remote controller, and select a location for easy maintenance.



CAUTION



This appliance is not intended for use by persons (including children) with reduced physical, sensory or mental capabilities, or lack of experience and knowledge, unless they have been given supervision or instruction concerning use of the appliance by a person responsible for their safety.

Children should be supervised to ensure that they do not play with the appliance.

<for European market only>

This appliance can be used by children aged from 8 years and above and persons with reduced physical, sensory or mental capabilities or lack of experience and knowledge if they have been given supervision or instruction concerning use of the appliance in a safe way and understand the hazards involved. Children shall not play with the appliance. Cleaning and user maintenance shall not be made by children without supervision.



- Do not operate with wet hands.
- Do not wash with water.

Safety precautions

[General precautions for Wireless LAN functionality]

- The wireless LAN coverage must include the remote controller installation location.
- Please ensure that the router supports the WPA™ / WPA2™ / WPA3™ encryption.
- To complete connection of this remote controller to the wireless network service the Router may be required.
- The End user should read and accept the Terms of use and Privacy Notice in the contents of “Panasonic Comfort Cloud” app.
- There is a risk of unauthorised operation if a vulnerable password is set for the wireless router.
- Users are responsible for all costs associated with downloading and using the “Panasonic Comfort Cloud” app and the remote controller, including without limitation all fees charged by your Device carrier and internet service provider and any other wireless LAN or data access charges.
- Panasonic remote controller is designed for communication to the “Panasonic Comfort Cloud” app.
- Third party wireless LAN interfaces cannot be connected to the “Panasonic Comfort Cloud” app.
- Updates to the service may mean there are changes to the design of the “Panasonic Comfort Cloud” app screen and display.

[Precautions for using mobile device application]

- When operating an air conditioner from a remote controller located outside the visibility of the air conditioner, make sure that the operation of the air conditioner will not negatively affect its surroundings or the occupants beforehand.
- When occupants include children, elderly people, people with ailments, or people with disabilities, make sure the product is used in the presence of a capable, supervising adult.
- When one or more people are in a room with an air conditioner, let them know beforehand that the air conditioner is going to be operated from a remote controller located outside the visibility of the air conditioner.
- Children should be supervised or instructed to stay away from the product.
- Poor radio-wave conditions due to an existence of obstacles or radio-emitting devices, such as a microwave oven, in the vicinity of the product can lead to a non-response error. Periodically check the operating conditions of the product.
- It is recommended to lock the mobile device screen to prevent inadvertent operation of the air-conditioning system.

Part names

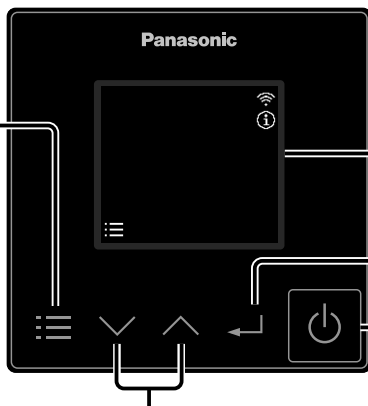
Control panel / Top screen

The control panel colour of CZ-RTC6WZ2 is white.

■ When stopped

Menu button

- When pressed repeatedly during operation, this shows operating status confirmation, set temperature, operation mode, fan speed, zone, and the menu screen.
- When pressed while stopped, the menu screen is displayed. Zones can be selected even while stopped.



LCD screen

Enter button

Fixes the selected content.

Start/Stop button

Starts/Stops operation.

Up/Down buttons

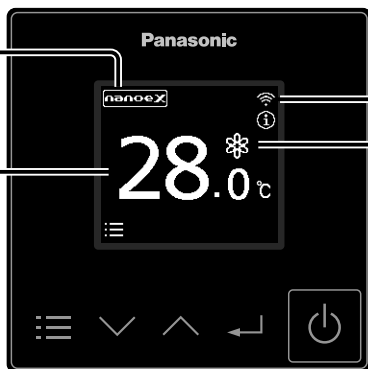
Selects an item.

■ When operating

Under operation of nanoe™ X*

* Available only if the air conditioner has nanoe™ X function.

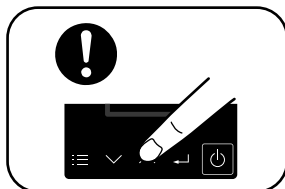
Set temperature



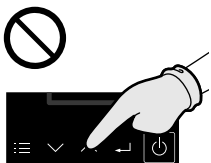
Connected to a wireless LAN network via a router

Operation mode

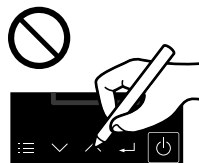
Note



Press centre



No glove



No pen

Specifications

Model No.	CZ-RTC6Z2 / CZ-RTC6WZ2
Dimensions	(H) 86 mm x (W) 86 mm x (D) 25 mm
Weight	0.10 kg
Temperature/ Humidity range	0 °C to 40 °C / 20% to 80% (No condensation) * Indoor use only.
Power Source	DC16 V (supplied from indoor unit)
Wireless LAN standard	IEEE 802.11 b/g/n
Frequency range	2.4 GHz band
Encryption	WPA™ / WPA2™ / WPA3™
OS version on the mobile device for “Panasonic Comfort Cloud” app	Check on the relative app store for supported OS versions.

Firmware Update Function

This product has functionality for connecting to the Panasonic firmware update server over the Internet to automatically update the device firmware to the latest version. To update the firmware, the device will do check, once per day, whether its firmware is the latest version after power up. And if an update is required, the update is applied and the device restarts automatically. Operations are not possible while the device is being restarted (Requires a maximum of five minutes).

Copyright

- iOS is the name of the OS of Apple Inc. IOS is a trademark or registered trademark of Cisco in the US and other countries which has been licensed for use.
- Apple and the Apple logo are trademarks of Apple Inc. that are registered in the US and other countries. App Store is a service mark of Apple Inc.
- Android™, Google Play™ and Google Play™ logos are registered trademarks of Google LLC.
- “WPA™”, “WPA2™”, and “WPA3™” are the registered trademarks of the “Wi-Fi Alliance®”.
- “QR Code” is a registered trademark of DENSO WAVE INCORPORATED in Japan and other countries.
- Other names, company names, product names, etc described in this manual are trademarks or registered trademarks of each company. In the text, some ™ and ® marks are not listed.

About Software

This product incorporates the following software:

- 1) The software developed independently by or for Panasonic Corporation,
- 2) The software owned by third party and licensed to Panasonic Corporation,
- 3) The licensed open-source software which meets conditions that make it unnecessary to release the source code

Software that is categorized in (3) above may be distributed with the expectation that they are useful by themselves, but there is no implicit warranty that these will be able to be turned into products or made applicable for specific purposes, so no guarantee is made for them.

To check the latest license terms for the software, scan the QR code on the cover page and refer to the detailed manuals.

Setting Information

Indoor unit model name	
Indoor unit serial number	
Outdoor unit model name	
Outdoor unit serial number	
System commissioning date	
Remote controller installation date	

Installer Contact Details

Name	
Telephone number	

Maximum radio-frequency power transmitted in the frequency bands

Type of wireless	Frequency band	Max EIRP (dBm)
Wireless LAN functionality	2412 - 2472 MHz	20 dBm

Regulatory Information

Model No. **CZ-RTC6Z2**



Model No. **CZ-RTC6WZ2**



Panasonic Australia
GF, 1 Innovation Road, Macquarie Park, 2113, NSW. Australia.
Panasonic New Zealand Ltd
18 Sir Woolf Fisher Drive, East Tamaki, Auckland 2013, New Zealand

Panasonic Corporation
<http://www.panasonic.com>

© Panasonic Corporation 2024
Printed in China

ACXF55-40110
F0624-0